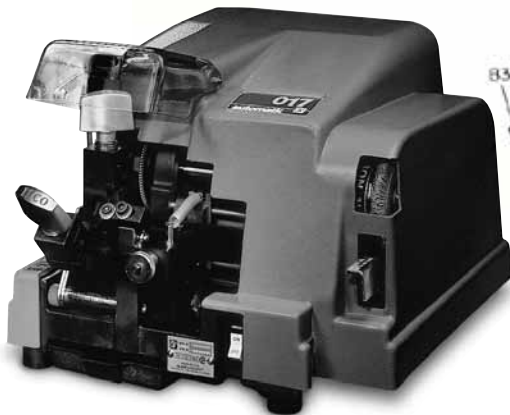
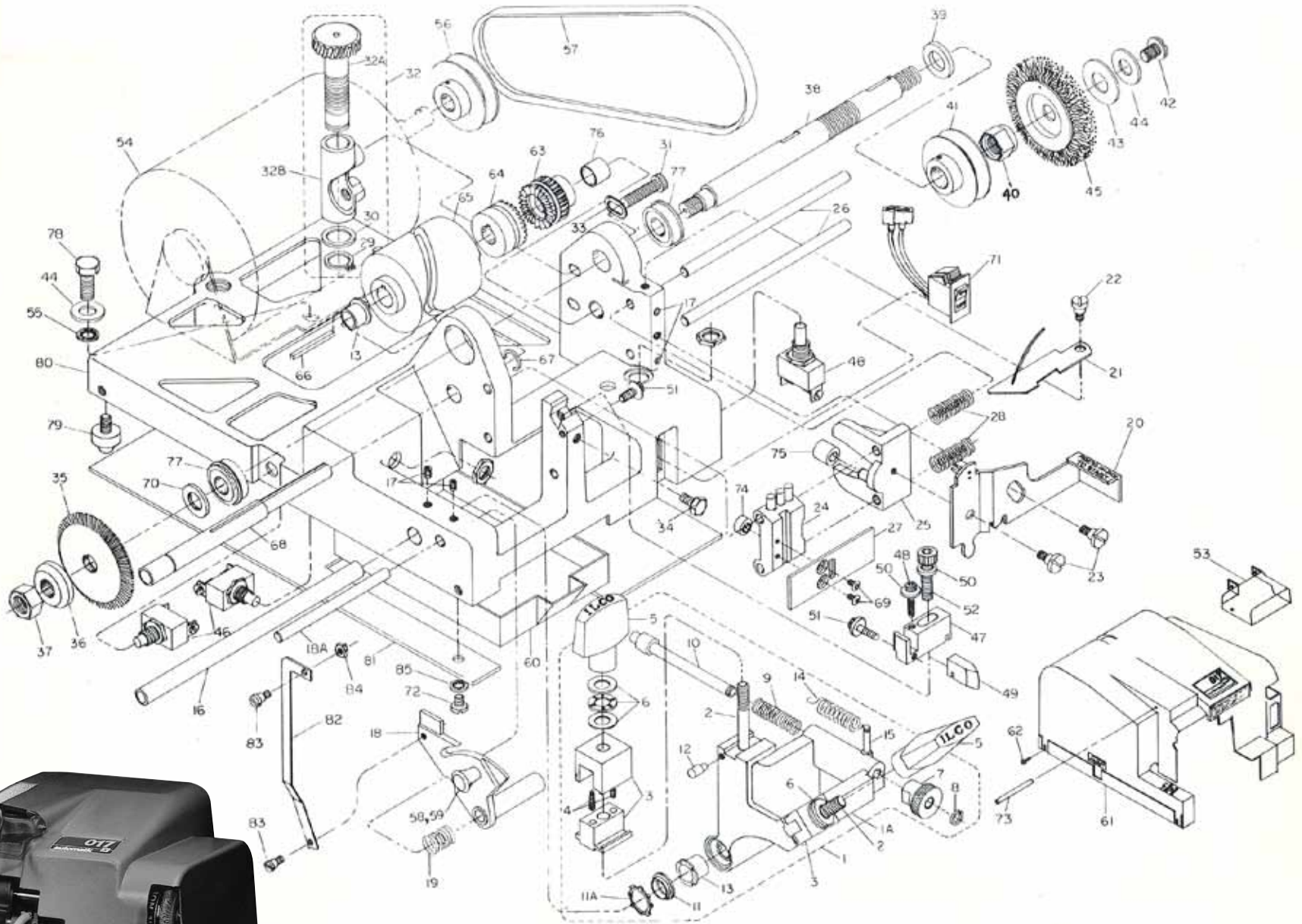


017



	Description	Part Number	Item Number		Description	Part Number	Item Number
1	Carriage Assembly	017-1	BD0330XXXX	38	Main Cutter Shaft	017-38	129546
2	Key Clamp Stud	017-2	BD0352XXXX	39	Pulley-Spacer	017-39	129543
3	Vises (Super Jaw 1) (Pair)	017-3	BD0409XXXX	40	M12 Shelf Locking Hex Nut Machined	017-40	B2400499
4	Vise Springs	017-4	BD0224XXXX	41	Cutter Shaft Pulley (New)	017-41	500391M
5	Wing Nut Assembly	017-5	BD0353XXXX	42	M6 Machine Screw, M6 X 1.0mm X 12mm, Pan Head M/S	017-42	174054
6	Thrust Bearings	017-6	BD0222XXXX	43	Brush Spacer	017-43	194285
7	Plunger Knob	017-7	129424	44	Flat Washer 3/4 X 5/16	017-44	194080
8	Snap Ring	017-8	164378	45	814-00-51 Nylon Brush	017-45	BD0221XXXX
9	Plunger Spring	017-9	184010	46	Switch (Old)	017-46	BD0354XXXX
10	Plunger Connecting Rod	017-10	129422	46A	Switch (New)	017-46A	129970
11	Carriage Shaft Wiper	017-11	129544	47	Guide Holder	017-47	129548
11A	Wiper Retaining Ring	017-11A	164004	48	M5 X 16.0mm Socket Head Screw	017-48	174039
12	Gooseneck Holding Pin	017-12	129428	49	Cutter Guide	017-49	BD0549XXXX
13	Bushing	017-13	129545	50	Guide Binding Washer	017-50	194008
14	Carriage Tension Spring	017-14	BD0232XXXX	51	Guide Adjustment Screw	017-51	129565
15	Groove Pin	017-15	153462	52	Guide Binding Screw	017-52	174038
16	Carriage Guide Shaft	017-16	129426	53	Safety Shield	017-53	BD0355XXXX
17	M5 X 8mm Set Screw	017-17	174036	54	1/4 H.P. Motor (110V)	017-54	129330
18	Gooseneck Assembly	017-18	600002P	55	Internal Tooth Washer	017-55	194271
18A	Gooseneck Guide Rod	017-18A	129538	56	Motor Pulley	017-56	129627
19	Starting Lever Spring	017-19	199018	57	2K-32A V-Belt	017-57	BD0243XXXX
20A	Starting Lever Assembly (New)	017-20A	600050	58	Knob	017-58	103139
21	Starting Lever Latch	017-21	B2215033	59	M5 X 8.0mm Flat Head Machine Screw	017-59	170004
22	Latch Shoulder Screw	017-22	129562	60	Chip Tray	017-60	129264
23	Starting Lever Shoulder Screw	017-23	129564	61	Hood	017-61	129595
24	Cam Follower	017-24	500006P	62	Hood Retaining Screw	017-62	174063
25	Clutch Shifter	017-25	500004M	63	Worm Gear Clutch	017-63	129472
26	Guide Rod	017-26	129598	64	Cam Drum Clutch	017-64	129470
27	Cam Follower Plate	017-27	102698U	65	Cam Drum	017-65	199012
28	Guide Rod Spring	017-28	184004	66	Key	017-66	129851
29	Worm Gear Snap Ring	017-29	164630	67	Cam Drum Shaft Retaining Ring	017-67	164025
30	Thrust Washer	017-30	101930	68	Cam Drum Shaft Retaining Ring	017-68	129408
31	M6 Socket Head Cap Screw	017-31	174040	69	Cam Follower Screw	017-69	174041
32	Worm Gear Housing Assembly Consists of #'s 32A, 32B 29 & 30	017-32	600003	70	Cutter Spacer	017-70	129536
32A	Worm Gear & Worm	017-32A	129016	71	Rocket Switch Assembly	017-71	BD0331XXXX
32B	Worm Gear Housing Machined	017-32B	500005M	72	M5 X 10.0mm RD HD Machined Screw	017-72	172010
33	Slotter Washer	017-33	194007	73	Safety Shield Pivot Shaft	017-73	129603
34	Carriage Adjusting Screw (M6 X 1mm X 12.0 Hex HD C/S)	017-34	147004	74	Cam Follower Roller	017-74	129412
35	P-9MC Cutter	017-35	BC0086XXXX	75	Clutch Shifter Roller	017-75	129416
36	Beveled Collar	017-36	B2515473	76	Cam Drum Shaft Bushing	017-76	129542
37	M12 L.H. Hex Nut	017-37	151012	77	Cutter Shaft Bearing	017-77	101008
				78	M6 X 20.0mm Hex Head Cap Screw	017-78	174037

017

	Description	Part Number	Item Number		Description	Part Number	Item Number
79	Rubber Mount	017-79	129541	90	Flat Blade Screw Driver	017-90	129604
81	Bottom Cover	017-81	129567	91	2.5mm Hex Key	017-91	159000
82	Lift Bracket	017-82	103172	92	3.0mm Hex Key	017-92	129587
83	M4 X .7mm Pitch Retaining Screw	017-83	129593	93	4.0mm Hex Key	017-93	129588
84	M4 X .7mm Hex Nut	017-84	151013	94	5.0mm Hex Key	017-94	129589
85	Lockwasher	017-85	194006	95	Straight Wires	017-95	BD0356XXXX
86	Wiring Harness (Old)	017-86	600009	96	Space Adjustment Key	017-96	B2404140
86A	Wiring Harness (New)	017-86A	600070	97	831-00-11 Ford Shoulder Gauge	017-97	BD0203XXXX
87	110 Volt-220 Volt Motor Dual Volt.	017-87	129395	N/S	831A-00-11 BEST Shoulder Gauge	831A-00-11	103212
88	12 Volt 1/4 H.P. Motor	017-88	129297	98	Cap Plug	017-98	129620
89	Strain Relief Bushing	017-89	129023	N/S	Instruction Manual	017-IM	125069