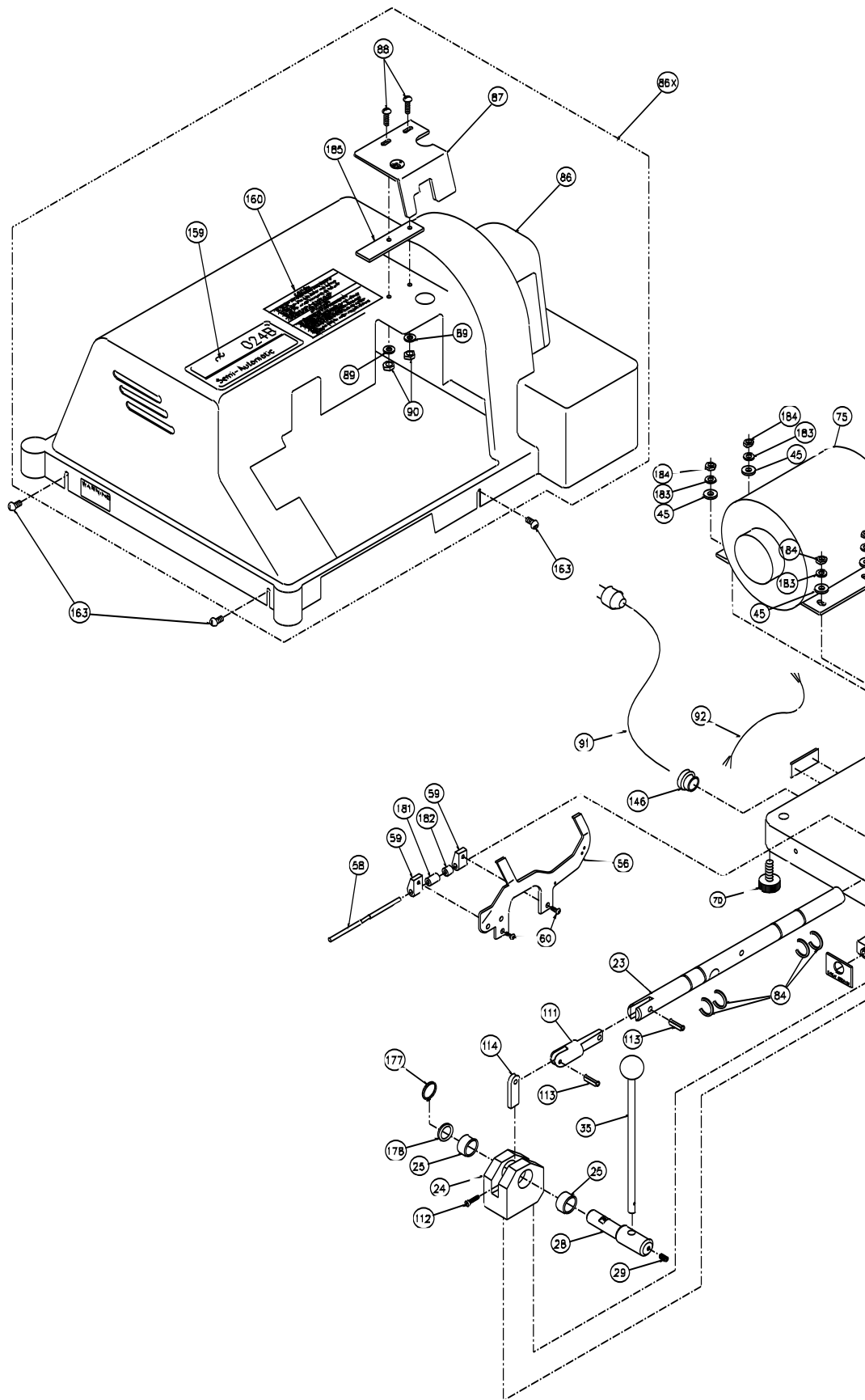
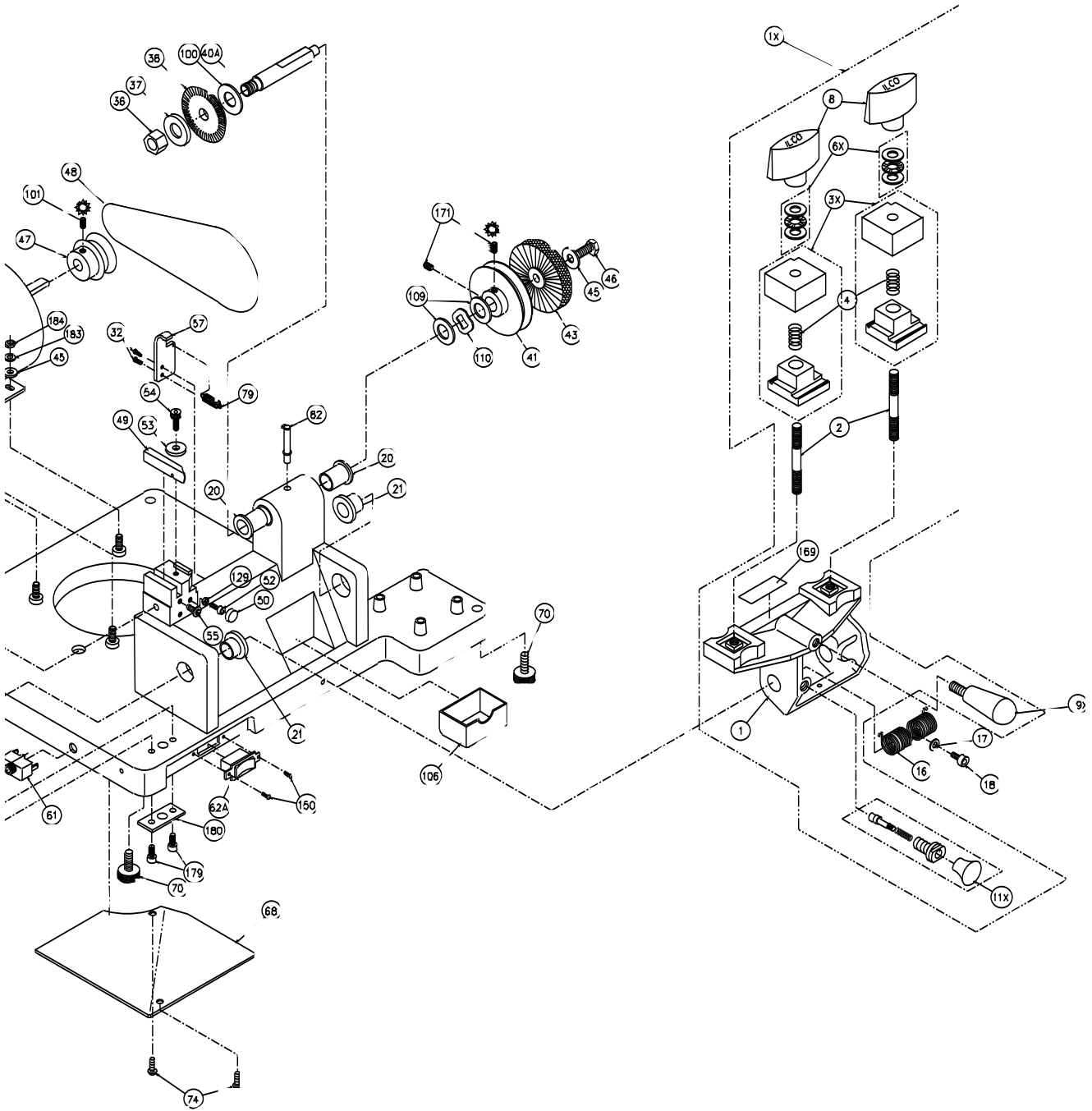


EXPLODED VIEW



EXPLODED VIEW



EXPLODED VIEW PARTS LIST

Refer to pages 6-7 for illustration

| Ref. | Part no. | Description | Ref. | Part no. | Description |
|------|----------|-----------------------------------|------|----------|-----------------------------------|
| 1 | 024B-1 | Carriage | 56 | 024B-56 | Key gauge |
| 1X | 024B-1X | Carriage assembly | 57 | 024B-57 | Key gauge bracket |
| 2 | 024B-2 | Carriage stud | 58 | 024B-58 | Key gauge dowel pin |
| 3X | 024B-3X | Vise jaw assembly | 59 | 024B-59 | Key gauge housing (two) |
| 4 | 024B-4 | Vise jaw spring | 60 | 024B-60 | Cap screw, 8-32 x 1/2" |
| 6X | 024B-6X | Thrust bearing set | 61 | 024B-61 | Circuit Breaker, ETA 1658 |
| 8 | 024B-8 | Wing nut | 62A | 024B-62A | On/Off switch |
| 9X | 024B-9X | Carriage handle assembly | 68 | 024B-68 | Electrical cover |
| 11X | 024B-11X | Trigger assembly | 70 | 024B-70 | Rubber Mount |
| 16 | 024B-16 | Carriage torsion spring | 74 | 024B-74 | Truss head screw, 8-32 |
| 17 | 024B-17 | Washer | 75 | 024B-75 | Motor, 1/4 hp, 115V, C/S |
| 18 | 024B-18 | Screw, 10-32 x 1/2" | 79 | 024B-79 | Key gauge spring |
| 20 | 024B-20 | Cutter shaft bushing | 82 | 024B-82 | Oil cup |
| 21 | 024B-21 | Carriage shaft bushing | 84 | 024B-84 | Crescent ring |
| 23A | 024B-23 | Carriage shaft | 85 | 024B-85 | 024B-110V nameplate |
| 24 | 024B-24 | Pivot Block | 86 | 024B-86 | Safety hood |
| 25 | 024B-25 | Pinion shaft bushing | 86X | 024B-86X | Safety hood assembly |
| 28A | 024B-28 | Pinion shaft | 87 | 024B-87 | Safety shield |
| 29A | 024B-29A | Set screw, 1/4-20 x 5/16" | 88 | 024B-88 | Shield screws, 10-32 x 1/2" |
| 32 | 024B-32 | Socket hd. screw, 10-24 x 3/8" | 89 | 024B-89 | Flat washer, #10 |
| 34 | 024B-34 | 1/4" lockwasher | 90 | 024B-90 | Nut, #10-32 |
| 35 | 024B-35 | Carriage lever | 91 | 024B-91 | Power cord |
| 35X | 024B-35X | Carriage lever assembly | 92 | 024B-92 | 3 wire motor cable |
| 36 | 024B-36 | Cutter nut, N-4 | 101 | 024B-101 | Motor pulley set screw |
| 37 | 024B-37 | Cutter spacer | 106 | 024B-106 | Chip Tray |
| 38 | 024B-38 | CU20 cutter | 109 | 024B-109 | Bearing washer |
| 40A | 024B-40A | Cutter shaft | 110 | 024B-110 | Wave washer |
| 41 | 024B-41 | Cutter shaft pulley | 111 | 024B-111 | 024B Yoke |
| 43 | 024B-43 | Nylon brush | 112 | 024B-112 | Socket head screw, 10-32 x 3/4" |
| 45 | 024B-45 | Brush bolt washer, 5/16" | 113 | 024B-113 | Roll pin |
| 46A | 024B-46A | Hex head screw, 5/16-18 x 1/4" | 114 | 024B-114 | Torque arm |
| 47 | 024B-47 | Motor pulley 2" - 3L | 115 | 024B-115 | Shoulder screw |
| 48 | 024B-48 | V-Belt, 3L-180 | 160 | 024B-160 | Caution label |
| 49A | 024B-49A | Cutter guide (stylus) | 171 | 024B-171 | Cutter pulley set screw, 3/8" -18 |
| 50 | 024B-50 | Cutter guide roller | 177 | 024B-177 | Ext. retaining Ring |
| 51 | 024B-51 | Guide roller bushing | 178 | 024B-178 | Washer |
| 52 | 024B-52 | Socket head screw, #8-32 X 1 5/8" | 179 | 024B-179 | #10-32 x 3/4 SCHS |
| 53 | 024B-53 | Cutter guide binding washer | 180 | 024B-180 | Mount Plate |
| 54 | 024B-54 | Cutter guide binding screw | 181 | 024B-181 | Key Gauge Spacer - Left |
| 55 | 024B-55 | Adjusting screw | 182 | 024B-182 | Key Gauge Spacer - Right |
| | | | 183 | 024B-183 | 1/4-20 Lockwasher |
| | | | 184 | 024B-184 | 1/4-20 Hex Nut |
| | | | 185 | 024B-185 | Plate - Chip Guard |
| | | | IM | 024B-IM | Instruction manual |
| | | | NS | 024B-240 | 220V 1/4 HP motor |