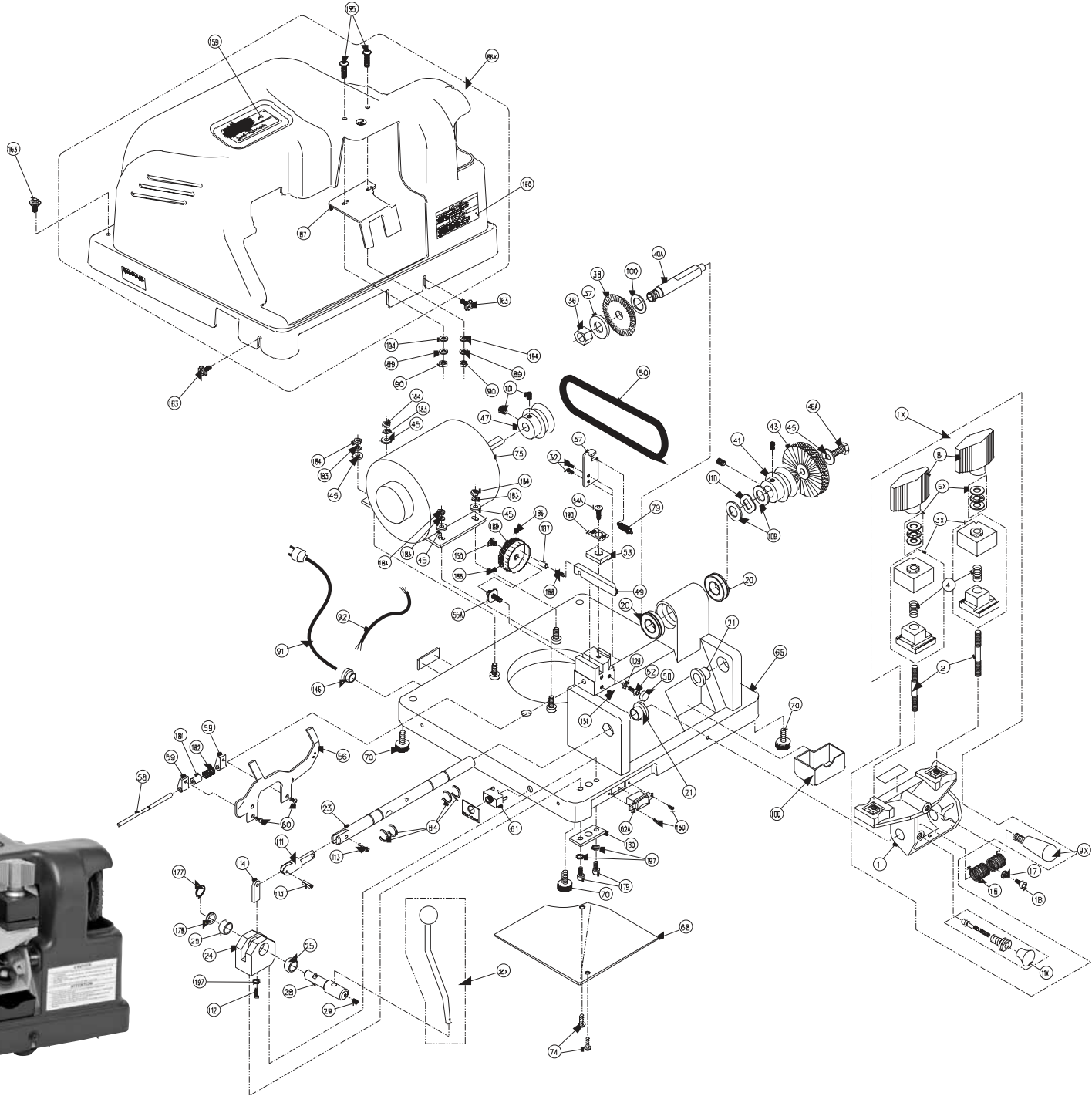


# 044 HD



# 044 HD

	Description	Part Number	Item Number		Description	Part Number	Item Number
1	Carriage	044HD-1	502619M	60	Cap Screw, 8-32 X 1/2"	025-60	174123
1X	Carriage Assembly	044HD-1X	502618	61	Circuit Breaker, ETA 1658	025-61	1103128P
2	Carriage Stud	025-2	BD0328XXXX	62	On & Off Switch	025-62A	BD0359XXXX
3X	Vise Jaw Assembly	045HD-3X	BD0053XXXX	65	Machined Base	044HD-65	502616M
4	Vise Jaw Spring	025-4	1103495P	68	Electrical Cord	040-68	131603
6X	Thrust Bearing Set	025-6X	BD0222XXXX	70	Rubber Mount	040-70	129849
8	Wing Nut	025-8	BD0329XXXX	74	Truss Head Screw, 8-32"	040-74	1103379P
9X	Carriage Handle Assembly	040-9X	131516M	75	Motor, 1/4 HP, 115V, C/S	040-75	131505
11X	Trigger Assembly	040-11X	BD0387XXXXX	79	Key Gauge Spring	024B-79	129054
16	Carriage Torsion Spring	040-16	1105170P	84	Crescent Ring	024B-84	1102033P
17	Washer	024-17	194251	86X	Safety Hood Assembly	044HD-86X	502620
18	Screw 10-32 X 1/2	024-18	174605	87	Safety Shield	044HD-87	129681
20	Cutter Shaft Bearing	045HD-20	132660	89	#10 Lockwasher	045-89	194006
21	Carriage Shaft Bushing	025-21	BD0361XXXX	90	Nut	025-90	151300
23	Carriage Shaft	044HD-23	132007	91	Power Cord	024B-91	1103290P
24	Pivot Block	024B-24	129152	92	3 Wire Motor Cable	024B-92	1103118P
25	Pinion Shaft Bushing	024B-25	1105030P	100	Cutter Spacer, Right	040HD-100	132671
28	Pinion Shaft	024B-28	129153	101	Set Screw, 1/4-20 X 1/4"	025-101	174619
29	Set Screw, 1/4-20 X 5/16"	024B-29	174079	106	Chip Tray	040-106	132021
32	Socket Head Screw, 10-24 X 3/8"	024B-32	129334	109	Bearing Washer	025-109	129031
35X	Carriage Lever Assembly	044-35X	600291	110	Wave Washer	025-110	194021
36	Cutter Nut	025-36	151090	111	Yoke	024B-111	129156
37	Cutter Spacer	025-37	1106180P	112	Socket Head Screw, 10-32 X 3/4"	024B-112	174685
38	Cutter	P-CU20	BC0219XXXX	113	Roll Pin	024B-113	129980
40	Cutter Shaft	040HD-40	132667	114	Torque Arm	024B-114	129155
41	Cutter Shaft Pulley	040HD-41	502607M	129	Locking Nut (8-32)	040-129	151009
51	Nylon Brush	814-00-51	BD0221XXXX	146	Power Cord Strain Relief	040-146	129023
45	Brush Bolt Washer, 5/16"	025-45	194080	150	Switch Screws, 6-32 X 1/4"	040-150	1103395P
46A	Hex Head Screw, 5/16-18 X 3/4"	025-46A	174279	151	Set Screw 8-32 X 3/8	040-151	174619
47	Motor Pulley 2-3L	025-47	129085	160	Caution Label	025-160	255288
48	V-Belt, 3L-170	040HD-48	132676	163	Hood Screw	045-163	174151
49	Cutter Guide (Stylus)	044-49	129462	171	Cutter Pulley Set Screw, 5/16-18	025-171	174144
50	Carriage Block	040-50	131123	177	Ext. Retaining Ring	024B-177	1500410P
52	Socket Head Screw, 8-32 X 1-1/2"	040-52	174114	178	Washer	024B-178	1500625P
53A	Cutter Guide Binding Plate	045-53A	129463	179	10-32 X 3/4 SCHS	024B-179	174685
54	Cutter Guide Binding Screw	045-54	174153	180	Mount Plate	024B-180	129154
55A	Adjusting Screw	045-55A	129461	181	Key Gauge Spacer-Left	024B-181	129148
56	Key Gauge	040-56	131797	182	Key Gauge Spacer- Right	024B-182	129149
57	Key Gauge Bracket	024B-57	129157	183	1/4-20 Lockwasher	040-183	194253
58	Key Gauge Dowel Pin	024B-58	129136	184	1/4-20 Hex Nut	040-184	151077
59	Key Gauge Housing (2)	025-59	1106113A	186	6-32 X 3/8 Set Screw	045-186	129745



# 044 HD

	Description	Part Number	Item Number		Description	Part Number	Item Number
187	Dowel	045-187	153009	N/S	Instruction Manual	044HD-IM	125190
188	Dowel Spring	045-188	199179	N/S	Hex Key 3/32		129014
189	Adjustment Dial	045-189	129467	N/S	Hex Key 5/32		129074
190	Cutter Guide Label	045-190	186066	N/S	Hex Key 1/8		129109
194	Chip Guard #10 Flat Washer	045-194	194272	N/S	040 Sargent Guide		BD0600XXXX
197	10-32 X 1/2 Button Head Screw	045-197	194038				