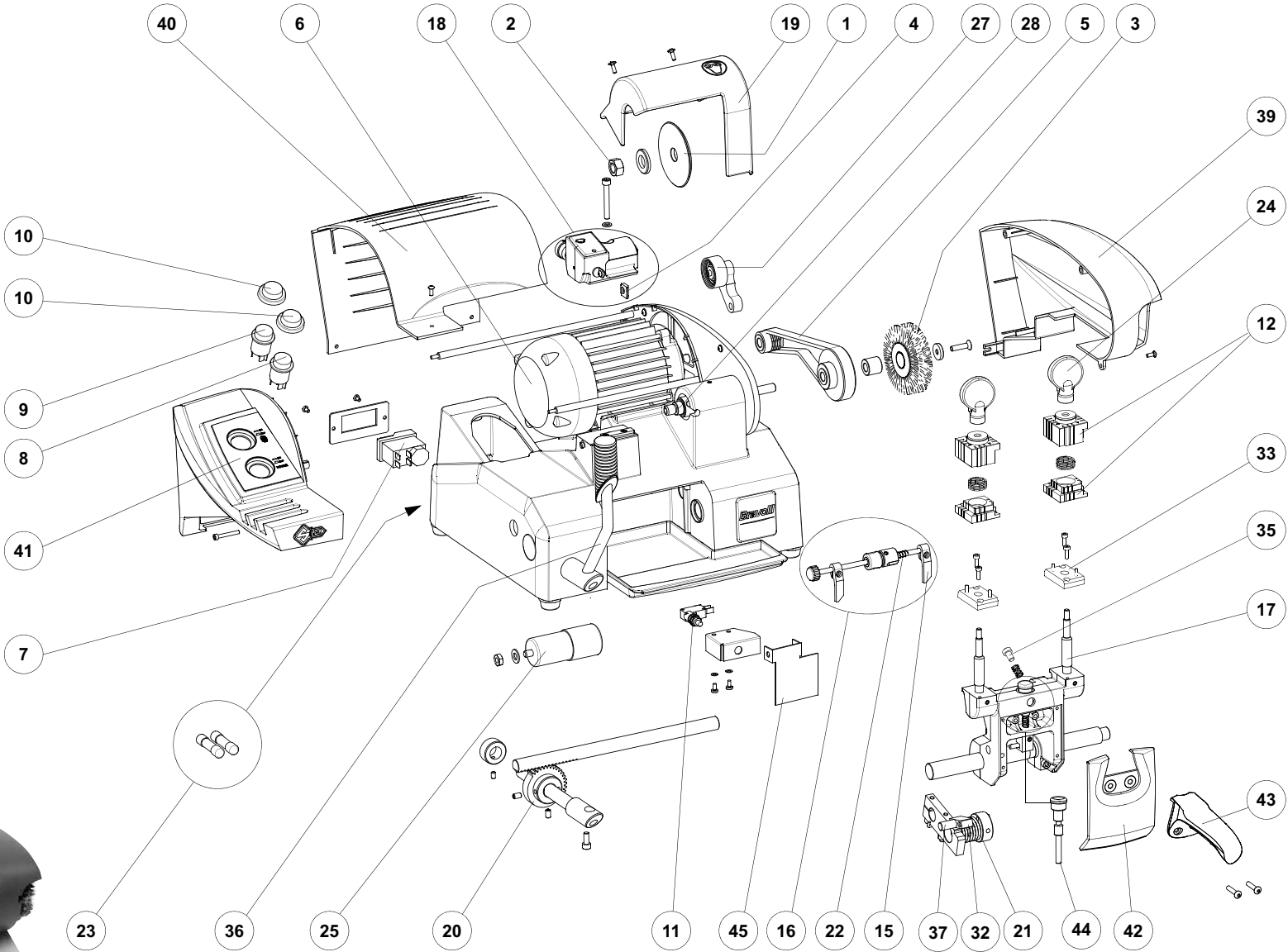


# Bravo III



# Bravo III

	Description	Part Number	Item Number		Description	Part Number	Item Number
1	Cutter	D717898ZB	BC0505XXXX	22	Key Gauge Spring	D926634ZR	BL0850XXXX
2	Cutter Nut	D901249ZR	BJ0263XXXX	23	Fuses 6.3 Amps-Rapid	D906749ZR	BJ0152XXXX
3	Brush	D925102ZR	BJ0855XXXX	24	Clamp Knob	D902170ZR	BJ0223XXXX
4	Tracer Point	D925121ZR	BJ0853XXXX	25	Capacitor (25MF)	D925122ZR	BJ0852XXXX
5	Belt	D923748ZR	BJ0856XXXX	27	Belt Stretcher	D932439ZR	BJ0895XXXX
6	Motor 110/60	D923698ZR	BJ0857XXXX	28	Cutter Shaft Set	D926627ZR	BJ0903XXXX
7	Master Switch	D925500ZR	BJ0846XXXX	32	Carriage Stop Equalizer	D904943ZR	BJ0363XXXX
8	Main Switch	D925120ZR	BJ0833XXXX	33	Clamp Base Assembly	D927869ZR	BJ0860XXXX
9	Brush Switch	D923743ZR	BJ0785XXXX	35	Stop Pin	D905283ZR	
10	Rubber Switch Cover	D904615ZR	BJ0448XXXX	36	Carriage Movement Lever	D904922ZR	BJ0359XXXX
11	Microswitch	D923706ZR	BJ0046XXXX	37	Equalizer Pin	D904944ZR	BJ0364XXXX
12	Clamp Set	D926495ZR	BJ0848XXXX	39	Belt Shield	D928616ZR	BJ0865XXXX
15	Gauge Tab	D926633ZR	BJ0849XXXX	40	Motor Shield	D928615ZR	BJ0864XXXX
16	Key Gauge Set	D926631ZR	BJ0851XXXX	41	Switches Shield	D928612ZR	BJ0861XXXX
17	Jaw Stud	D927877ZR	BJ0858XXXX	42	Carriage Cover	D928614ZR	BJ0863XXXX
18	Tracer Point Housing Assembly	D925110ZR	BJ0854XXXX	43	Carriage Lever	D932502ZR	
19	Protective Shield	D924048ZR	BJ0654XXXX	44	Carriage Release Pin	D924045ZR	BJ0894XXXX
20	Gear	D904921ZR	BJ0358XXXX	45	Switch Plate	D923704ZR	BJ0881XXXX
21	Carriage Spring	D904915ZR	BJ0356XXXX				