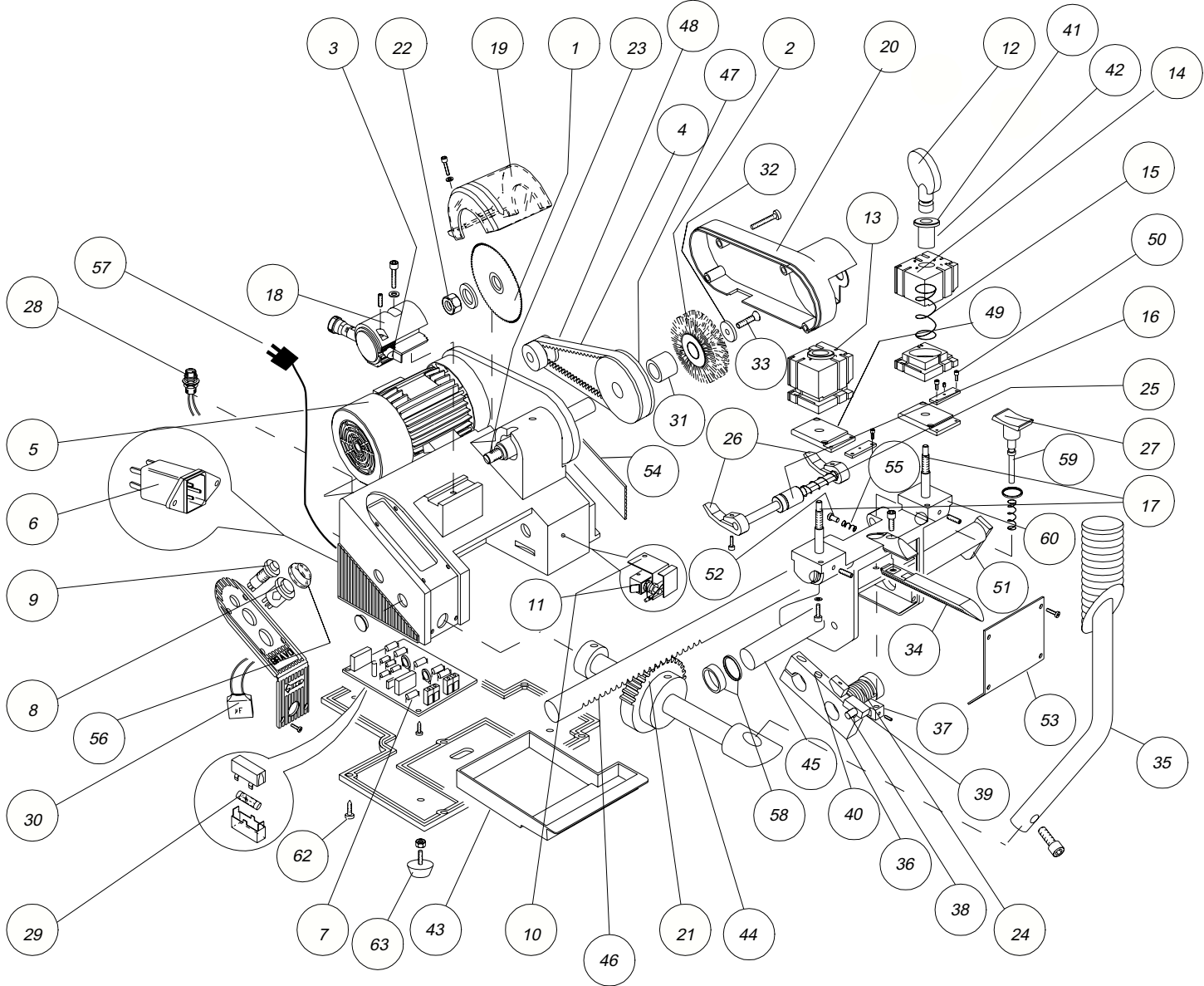


Bravo II



Bravo II

	Description	Part Number	Item Number		Description	Part Number	Item Number
3	Tracer Point	D717899ZB	BH0038XXXX	43	Chip Tray	D104914FA	BJ0011XXXX
4	Belt	D301681ZZ	BJ0420XXXX	44	Lever Shaft	D404920BA	Special Order
5	Motor	D505692AA	BJ0400XXXX	46	Carriage Shaft	D404918LA	BJ0795XXXX
6	Bravo Outlet	D307257ZZ	BJ0467XXXX	47	Cutter Shaft Pulley	D401773BA	BJ0720XXXX
7	Electric Board	D407287ZZ	BJ0568XXXX	48	Motor Pulley	D401977BA	129240
8	Main Switch	D305444ZZ	BJ0455XXXX	49	Base Plate (Vise Jaw)	D405279BA	BJ0553XXXX
9	Brush Switch	D909416ZR	BJ0087XXXX	50	Aligning Plate (Vise Jaw)	D405281BA	BJ0554XXXX
11	Microswitch	D300807ZZ	BJ0046XXXX	51	Brass Tab	D405288LA	BJ0721XXXX
11	Microswitch Carriage Shaft	D404917LA	129242	52	Gauge Fork Locking Pin	D405283BA	BJ0556XXXX
12	Jaw Handle	D902170ZR	BJ0223XXXX	53	Cover Plate	D404948VZ	BJ0365XXXX
13	Jaw Set	D507215BA	BJ0402XXXX	54	(Right) Lower Cover	D105054FA	BJ0718XXXX
15	Jaw Spring	D401606ZZ	BJ0523XXXX	55	Spring Stake	D405616ZZ	BJ0564XXXX
16	Gauge Set (complete)	D905318ZR	BJ0141XXXX	56	Plastic Covers (Buttons)	D304615ZZ	BJ0448XXXX
17	Jaw Stud	D405278LA	BJ0552XXXX	57	Power Cord	D706590ZB	BJ0385XXXX
18	Tracer Point Set	D504862ZM	BJ0396XXXX	58	Carriage Shaft Bushings	D505301ZZ	BJ0398XXXX
19	Protective Guard	D104923FA	BJ0012XXXX	59	Carriage Button Pin	D404941BA	BJ0361XXXX
20	Belt Guard	D905321ZR	BJ0143XXXX	62	Bottom Cover Screws	D202065ZZ	BJ0031XXXX
21	Gear	D404921ZF	BJ0358XXXX	63	Rubber Foot	D300025ZZ	BJ0036XXXX
22	Cutter Nut	D901249ZR	BJ0263XXXX	70	Carriage Assembly	D907217ZR	BJ0164XXXX
23	Cutter (CU50A)	D717898ZB	BC0123XXXX	N/S	Lamp Socket & Wires	D710070ZB	BJ0300XXXX
23	Cutter Shaft Set	D905316ZR	BJ0140XXXX	n/s	Carriage (Casting)	D104747LA	BJ0010XXXX
24	Carriage Spring	D404915ZZ	BJ0356XXXX	n/s	Tool Pack	D607325ZC	BJ0722XXXX
25	Gauge Spring	D405454ZZ	BJ0561XXXX	n/s	Allen Key 2mm	D300221ZZ	BJ0648XXXX
26	Gauge (Tabs)	D904947ZR	BJ0137XXXX	n/s	Allen Key 2.5mm	D300222ZZ	BJ0649XXXX
27	Push Button (Red)	D105171FA	BJ0013XXXX	n/s	Allen Key 3mm	D300223ZZ	BJ0650XXXX
29	Fuses 6.3amps	D906749ZR	BJ0152XXXX	n/s	Allen Key 4mm	D300224ZZ	BJ0651XXXX
30	Suppressor (capacitor)	D909414ZR	BJ0783XXXX	n/s	Allen Key 5mm	D300225ZZ	BJ0652XXXX
31	Spacer (Brush Assy)	D405300BA	BJ0557XXXX	n/s	Allen Key 6mm	D300226ZZ	BJ0653XXXX
32	Brush	D301840ZZ	BJ0429XXXX	n/s	Steel Tip Stop Set	D402302BA	BJ0547XXXX
32	Washer (Brush Assy)	D400847BA	BJ0488XXXX	n/s	Calibrating Setting Blanks	D401561BA	BJ0515XXXX
33	Screw (Brush Assy)	D200832ZZ	BJ0028XXXX	n/s	"Steel Pin set, 1.2mm/1.7mm "	D401554ZZ	BD0094XXXX
34	Carriage Handle	D404940ZF	BJ0360XXXX	n/s	Cutter Locking Bar	D400754BA	BJ0486XXXX
35	Carriage Lever	D404922ZF	BJ0359XXXX	n/s	Wrench 19mm	D3000783ZZ	BJ0647XXXX
36	Carriage Stop	D404919BA	BJ0357XXXX	n/s	Lamp Without Bulb	D709990ZB	BJ0294XXXX
37	Carriage C Block	D404942BA	BJ0362XXXX	n/s	Bravo II Manual	D407270XA	132015
38	Carriage Relay Pin	D404944BA	BJ0364XXXX	n/s	Bravo Box w/Foam	B1111-0007	B1111-0007
39	Carriage Stop Block	D404943BA	BJ0363XXXX	n/s	Bravo Stop Block Pin	D200294ZZ	BJ0734XXXX
40	Carriage Adjusting Screw	D204932ZZ	BJ0032XXXX	n/s	Gauge Shaft Barrel	D404946BA	BJ0723XXXX
41	Washer (Vise Jaw)	D301397BA	BJ0068XXXX	n/s	Rubber Bushing Seal (Carriage)	D304076ZZ	132086
42	Sleeve (Vise Jaw)	D405282BA	BJ0555XXXX				